

FOR
LEASE

2400 BISSO LANE WALNUT CREEK, CA

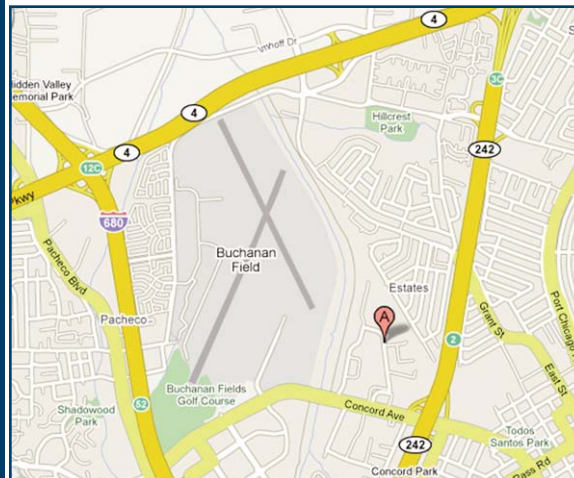


Bisso Corporate Center is a two story office/flex office building comprised of approximately 141,000 square feet located in Concord; conveniently surrounded by retail services, restaurants, hotels and recreational activities. This Corporate Campus is complete with lush landscaping and outdoor picnic areas.

For More Information Contact:
Whiff Collins CA DRE #00611570
Dan Moylan CA DRE #00845782
T (925) 287-8747
wcollins@mccrealtygroup.com
dmoylan@mccrealtygroup.com
1111 Civic Drive, Suite 200
Walnut Creek, CA 94596
www.mccrealtygroup.com



REALTY GROUP, INC.



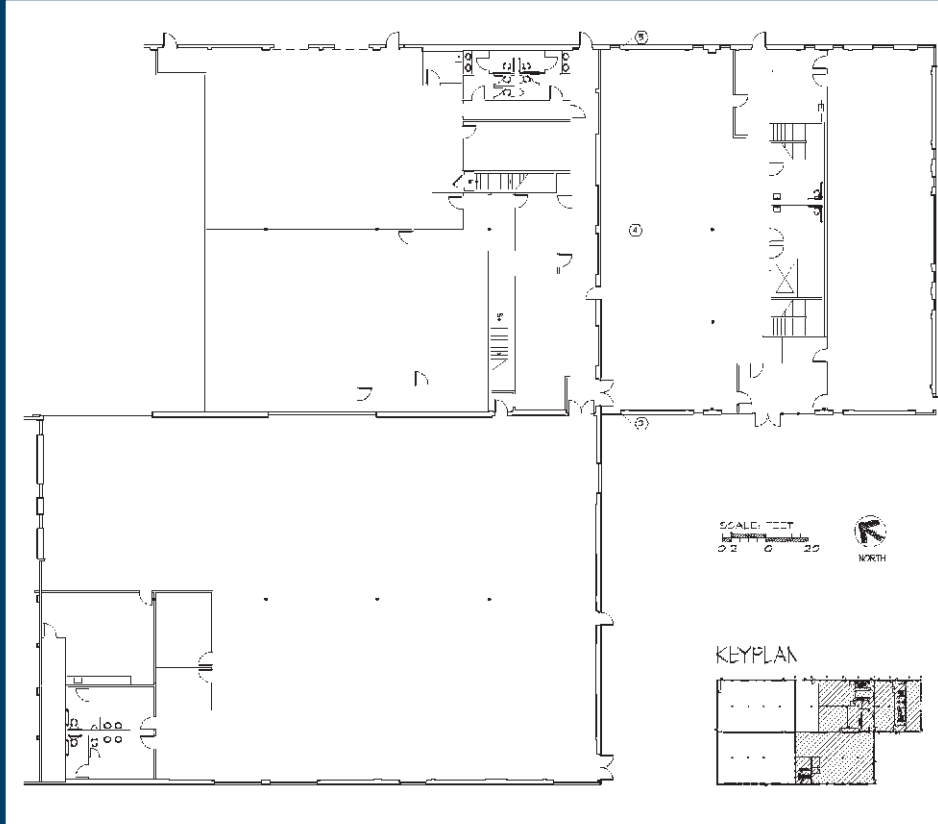
35,653 SF AVAILABLE

- First Floor ~ 26,865 SF
- Second Floor ~ 8,788 SF
- Available 1/1/2011

PROPERTY FEATURES

- Open first floor environment with second floor private offices
- Close proximity to Freeways
- Abundant Parking 5/1,000
- Building & Monument Signage
- Dedicated Server Room

2400 BISSO LANE WALNUT CREEK, CA

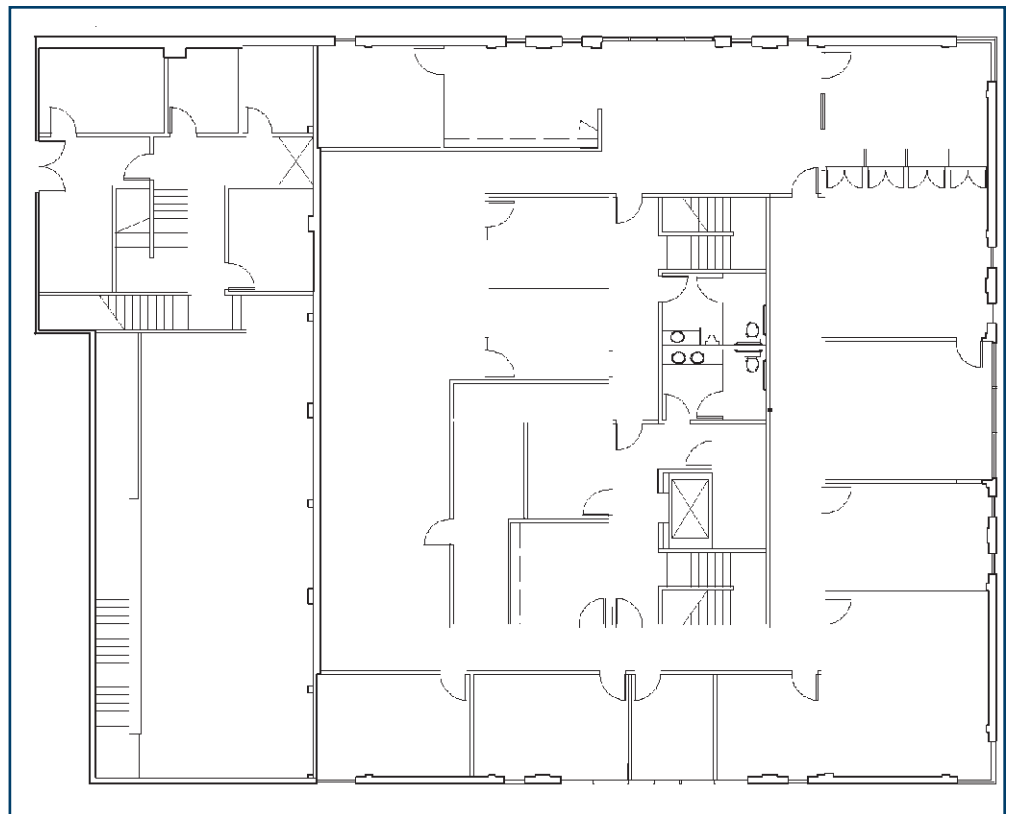


FIRST FLOOR

26,865 SF

SECOND FLOOR

8,788 SF



For More Information Contact:

Whiff Collins CA DRE #00611570

Dan Moylan CA DRE #00845782

T (925) 287-8747

wcollins@mccrealtygroup.com

dmoylan@mccrealtygroup.com

1111 Civic Drive, Suite 200

Walnut Creek, CA 94596

www.mccrealtygroup.com



REALTY GROUP, INC.