

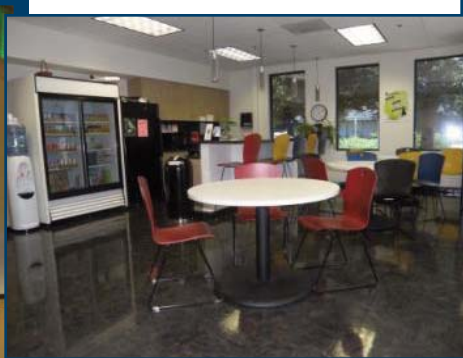
**F
O
R
L
E
A
S
E**

2411 STANWELL DRIVE CONCORD, CA



**2411 STANWELL DRIVE
1ST AND 2ND FLOOR
AVAILABLE 22,440 SF**

- Class A Office Space
- Two Stories with an elevator
- Asking \$1.50 IG



PROPERTY FEATURES

- Recently renovated to Class A Office Space
 - Close proximity to Freeways
- 50 free surface parking stalls as well as off street parking
 - Monument Signage Available
 - Professional Landscaping
- Spacious Offices, Large & Small Conference/Meeting
 - Lunch / Break Area
 - Sunny Corridors

For More Information Contact:

Whiff Collins CA DRE #00611570 8

T (925) 287-8747

wcollins@mccrealtygroup.com

1111 Civic Drive, Suite 200

Walnut Creek, CA 94596

www.mccrealtygroup.com

mcc

REALTY GROUP, INC.