

FOR  
LEASE

# VITUCCI BUSINESS CENTER

877 YGNACIO VALLEY ROAD

WALNUT CREEK, CA

Looking to Expand  
your Practice???

Affiliate with a  
successful marketing  
organization that can  
promote your services  
on the radio and TV



**mcc**

REALTY GROUP, INC.

1111 Civic Drive, Suite 200  
Walnut Creek, CA 94596

For more information contact:  
Dan Moylan CA DRE #00845782

[dmoylan@mccrealtygroup.com](mailto:dmoylan@mccrealtygroup.com)

Phone (925) 287-8747

Fax (925) 287-8746

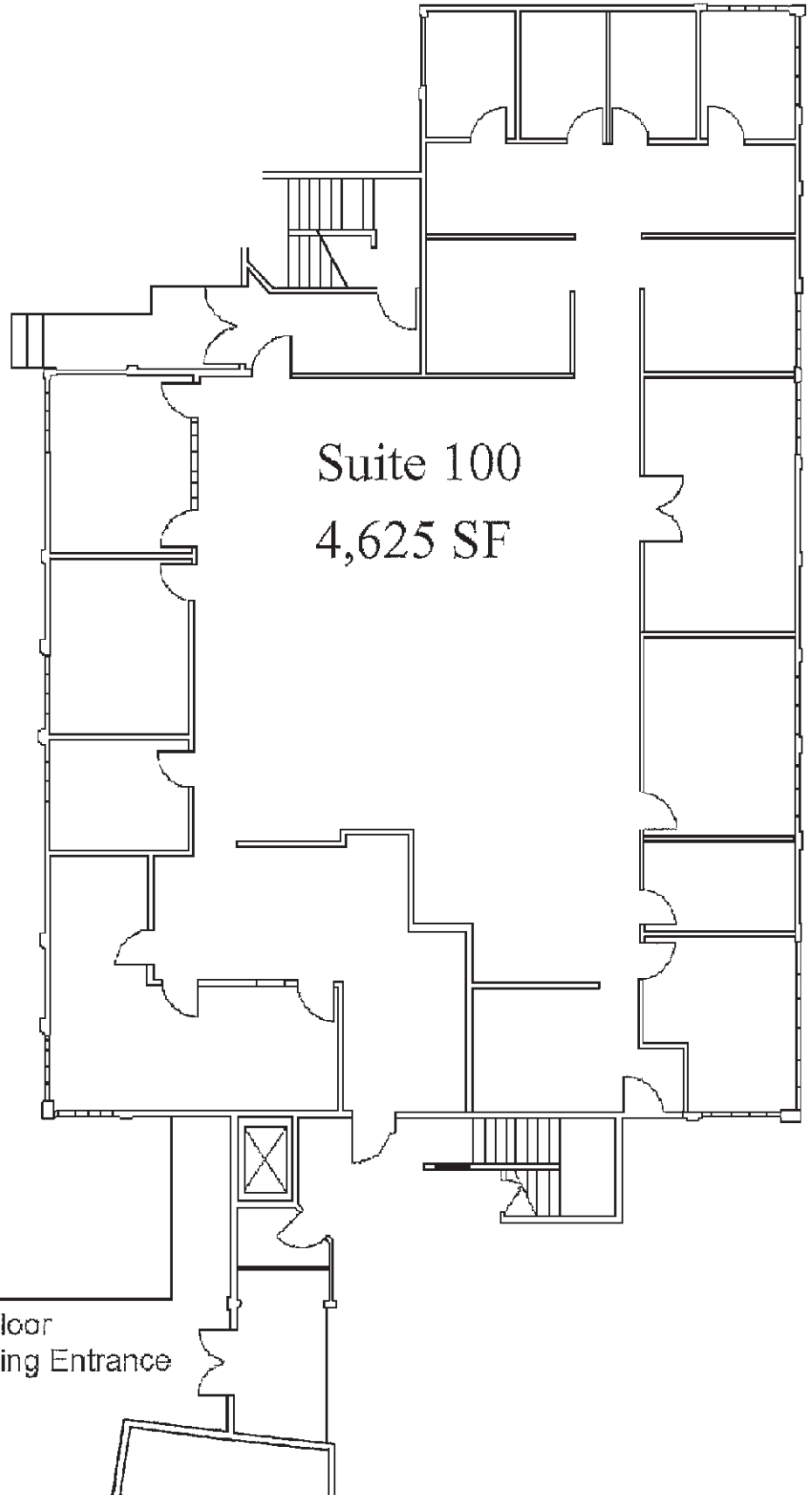
[www.mccrealtygroup.com](http://www.mccrealtygroup.com)

CA DRE #01334745

- Suite 100 - 4,625 Square Feet Available May 2010
  - Potential Monument Signage Available
  - Average Daily Traffic: 72,700 vehicles per day
  - Asking Rental Rate: \$2.15 PSF
  - Suite is Fully Furnished
- *Building Owner Pat Vitucci offers to host the newest Tenant on his hour long radio show "Your Financial Life" and /or direct clients to Tenant.*

F  
L  
O  
O  
R  
P  
L  
A  
N

VITUCCI BUSINESS CENTER  
877 YGNACIO VALLEY ROAD



1111 Civic Drive, Suite 200  
Walnut Creek, CA 94596

For more information contact:  
Dan Moylan CA DRE #00845782

[dmoylan@mccrealtygroup.com](mailto:dmoylan@mccrealtygroup.com)  
Phone (925) 287-8747  
Fax (925) 287-8746  
[www.mccrealtygroup.com](http://www.mccrealtygroup.com)  
CA DRE #01334745